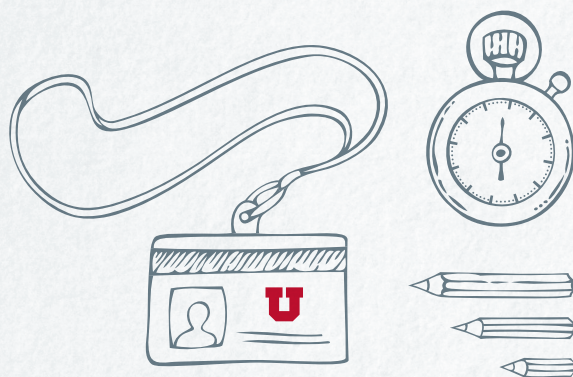


TRANSFER STUDENT HANDBOOK

WELCOME TO
THE UNIVERSITY OF UTAH



WELCOME TO ORIENTATION



WE KNOW YOU HAVE A LOT OF QUESTIONS ABOUT TRANSITIONING TO THE U AND WE'RE HERE TO MAKE IT EASIER.

THIS GUIDE WILL HELP YOU NAVIGATE:

STUDENT LIFE,
CONNECTIONS & COMMUNITIES,
AND HELP IF YOU NEED IT

HOW DO I FIND COMMUNITY?



CRIMSON MENTORS

THE CRIMSON MENTOR PROGRAM PAIRS NEW TRANSFER STUDENTS WITH CURRENT TRANSFER STUDENT MENTORS. THE MENTORS ARE AVAILABLE FOR SUPPORT, ADVISING ABOUT CAMPUS LIFE AT THE U, AND CONNECT MENTEES TO SOCIAL, ACADEMIC, AND PROFESSIONAL PROGRAMS AND WORKSHOPS.

bit.ly/crimsonmentors



"I COULD NOT HAVE ASKED FOR A MORE DEVOTED AND CARING MENTOR! SHE EXCEEDED MY EXPECTATIONS. I'M GLAD TO HAVE SUCH A GREAT FRIEND NOW." —CRIMSON MENTOR STUDENT



TRANSFER WORKSHOP SERIES

THE TRANSFER WORKSHOP SERIES IS DESIGNED SPECIFICALLY A TRANSFER STUDENT TO LEARN ABOUT A VARIETY OF UNIVERSITY SERVICES AND OPPORTUNITIES, AND TO CONNECT WITH OTHER STUDENTS. STUDENTS WHO ATTEND TWO TRANSFER WORKSHOP SERIES COMPLETE ONE OF THE REQUIREMENTS FOR ADMITTANCE INTO THE CRIMSON TRANSFER HONOR SOCIETY.

<https://orientation.utah.edu/transfer/transfer-workshop-series.php>



CRIMSON TRANSFER HONOR SOCIETY

CRIMSON TRANSFER HONOR SOCIETY (CTHS) STRIVES TO RECOGNIZE THE ACADEMIC EXCELLENCE ATTAINED BY TRANSFER STUDENTS DURING THEIR FIRST SEMESTER AT THE U. CTHS SPONSORS EVENTS, SERVICE PROJECTS, AND SCHOLARSHIPS FOR TRANSFER STUDENTS.

orientation.utah.edu/transfer/crimson-transfer-honor-society.php

- ➔ BE A TRANSFER STUDENT
- ➔ EARN AT LEAST A 3.5 GRADE POINT AVERAGE IN YOUR FIRST 12 CREDIT HOURS HERE AT THE U
 - ⦿ FOR FULL-TIME STUDENTS, THIS REQUIREMENT WILL BE FULFILLED YOUR FIRST SEMESTER
 - ⦿ FOR PART-TIME STUDENTS, THIS REQUIREMENT WILL BE FULFILLED WHEN YOU HAVE COMPLETED YOUR FIRST 12 CREDIT HOURS HERE AT THE U
- ➔ ATTEND AT LEAST **TWO TRANSFER WORKSHOPS** DURING YOUR FIRST SEMESTER AT THE U
 - ⦿ SEE AVAILABLE TRANSFER WORKSHOPS AT orientation.utah.edu/transfer/transfer-workshop-series.php
 - ⦿ STUDENTS WHO START IN SUMMER SEMESTER MUST COMPLETE 12 CREDITS DURING SUMMER SEMESTER AND ATTEND TWO TRANSFER WORKSHOPS DURING THE FOLLOWING FALL SEMESTER
 - ⦿ PART-TIME STUDENTS MUST COMPLETE AT LEAST 12 CREDIT HOURS AND ATTEND AT LEAST TWO WORKSHOPS IN CONSECUTIVE SEMESTERS
- ➔ PAY A ONETIME \$50.00 MEMBERSHIP FEE. ONE HUNDRED PERCENT OF THIS FEE GOES TOWARD CTHS SCHOLARSHIPS AND EVENTS

BENNION CENTER

THE BENNION CENTER FOSTERS LIFELONG SERVICE AND CIVIC PARTICIPATION BY ENGAGING THE UNIVERSITY WITH THE GREATER COMMUNITY IN ACTION, CHANGE, AND LEARNING. bennioncenter.org



CAMPUS CONNECT

CAMPUS CONNECT IS THE STUDENT INVOLVEMENT PLATFORM AT THE U THAT EMPOWERS STUDENTS TO CONNECT TO CAMPUS, DISCOVER INVOLVEMENT OPPORTUNITIES, AND TAKE CHARGE OF THEIR U EXPERIENCE.

IN CAMPUS CONNECT, EVERY STUDENT IS ABLE TO EXPLORE MORE THAN 600 RECOGNIZED STUDENT ORGANIZATIONS, CAMPUS RESOURCES, AND COUNTLESS CAMPUS EVENTS. OVER TIME, STUDENTS ARE ABLE TO DOCUMENT THEIR CO-CURRICULAR EXPERIENCES AND DEVELOP A PORTFOLIO OF THEIR OUT-OF-CLASSROOM LEARNING. getinvolved.utah.edu





HOW DO I ACHIEVE GOOD GRADES?

ACADEMIC ADVISING

EASE YOUR TRANSITION TO THE U BY MEETING WITH YOUR ACADEMIC ADVISOR. EXPLORE MAJORS, TRANSFER CREDITS, AND SET UP THE PERFECT CLASS SCHEDULE. ADVISING IS A PROCESS, NOT A ONETIME EVENT. THE ACADEMIC ADVISING CENTER ENCOURAGES YOU TO MEET WITH YOUR ADVISOR ON A REGULAR BASIS TO STAY ON TRACK FOR GRADUATION.

bit.ly/transferadvising

WRITING CENTER

BECOME A MORE CONFIDENT WRITER BY UTILIZING THE WRITING CENTER. THE CENTER IS LOCATED ON THE SECOND FLOOR OF THE MARRIOTT LIBRARY IN ROOM 2701. writingcenter.utah.edu

STUDENT SUCCESS ADVOCATES

SUPPORTING YOU IN CREATING YOUR SUCCESS HERE AT THE UNIVERSITY OF UTAH IS THE MOST IMPORTANT THING OUR STUDENT SUCCESS ADVOCATES DO. ADVOCATES KNOW THAT YOUR SITUATION IS UNIQUE, SO THEY TAKE TIME TO WORK CLOSELY WITH YOU TO LEARN ABOUT YOUR PARTICULAR NEEDS, ASPIRATIONS, AND GOALS. ssa.utah.edu

LEARNING CENTER

THE UNIVERSITY WANTS YOU TO SUCCEED. RESOURCES ARE AVAILABLE WHEN IT COMES TO ACADEMIC SUPPORT. TUTORING IS AVAILABLE TO ALL STUDENTS AT REALLY AFFORDABLE RATES. SOME OF THE LEARNING CENTER RESOURCES INCLUDE:

- ➔ INDIVIDUAL TUTORING
- ➔ DROP-IN TUTORING
- ➔ STUDY SKILLS AND LEARNING SUPPORT

learningcenter.utah.edu



CENTER FOR ETHNIC STUDENT AFFAIRS

THE CENTER FOR ETHNIC STUDENT AFFAIRS (CESA) TRANSFER PROGRAM PROVIDES ADVISING, RESOURCES, AND COMMUNITY TO HELP TRANSFER STUDENTS ACCOMPLISH THEIR GOALS AT THE UNIVERSITY OF UTAH. THERE ARE MORE THAN 9,000 TRANSFER STUDENTS AT THE U.

THE FIRST SEMESTER AND YEAR AFTER TRANSFERRING TO A NEW UNIVERSITY IS OFTEN THE MOST DIFFICULT TIME FOR TRANSFER STUDENTS. THE CESA TRANSFER PROGRAM WORKS TO MAKE THE TRANSITION TO THE U EASIER BY OFFERING ETHNIC 3790 TRANSNATIONAL EDUCATION. THIS CLASS IS FOR NEW TRANSFER STUDENTS TO HELP ACCLIMATE THEM TO THE UNIVERSITY OF UTAH. IT IS A CHANCE TO BE PART OF A COHORT OF FIRST-SEMESTER TRANSFER STUDENTS IN A WELCOMING ENVIRONMENT. THE COURSE FULFILLS THE IR REQUIREMENT AND FOCUSES ON BOTH THE TOPIC OF TRANSNATIONALISM AND CONNECTING YOU TO RESOURCES ON CAMPUS.

diversity.utah.edu/transfer

HOW DO I FIND SUPPORT IF I NEED OTHER HELP?

CAREER AND PROFESSIONAL DEVELOPMENT CENTER

THE CAREER AND PROFESSIONAL DEVELOPMENT CENTER HELPS STUDENTS PREPARE FOR A CAREER BY PROVIDING ASSISTANCE IN CREATING EXCELLENT RESUMES AND COVER LETTERS, ONE-ON-ONE CAREER COACHING, MOCK INTERVIEWS, AND DIRECT CONNECTIONS WITH EMPLOYERS. IT'S NEVER TOO EARLY TO GET STARTED. careers.utah.edu

CENTER FOR DISABILITY AND ACCESS

THE CENTER FOR DISABILITY AND ACCESS PROVIDES ACCOMMODATIONS AND SERVICES TO STUDENTS AT THE UNIVERSITY OF UTAH WHOSE CONDITION SIGNIFICANTLY IMPACTS THEIR ABILITY TO FUNCTION IN THE ACADEMIC SETTING. disability.utah.edu

CENTER FOR STUDENT WELLNESS

THE CENTER FOR STUDENT WELLNESS STRIVES TO HELP STUDENTS BE SUCCESSFUL IN THEIR ACADEMIC AND PERSONAL ENDEAVORS THROUGH A COMPREHENSIVE AND INTERSECTIONAL APPROACH TO WELLNESS. THE OFFICE FOCUSES ON PREVENTION, EDUCATION, AND RESPONSE FOR A VARIETY OF WELLNESS AREAS SUCH AS INTERPERSONAL VIOLENCE, RELATIONSHIP AND SEXUAL HEALTH, STRESS MANAGEMENT, LOW-RISK DRINKING, AND MORE. wellness.utah.edu

CHILD CARE

THE U OFFERS AFFORDABLE ON-CAMPUS CHILD CARE TO SUPPORT STUDENTS. THE CENTER FOR CHILD CARE AND FAMILY RESOURCES CAN ALSO HELP CONNECT YOU WITH ADDITIONAL RESOURCES, OPTIONS FOR PRESCHOOLS, AND FINANCIAL ASSISTANCE TO HELP PAY FOR CHILD CARE. childcare.utah.edu



LGBT RESOURCE CENTER

THE LGBT RESOURCE CENTER ACTS IN ACCOUNTABILITY WITH THE CAMPUS COMMUNITY BY IDENTIFYING THE NEEDS OF PEOPLE WITH A QUEER RANGE OF (A)GENDER AND (A)SEXUAL EXPERIENCES AND RESPONDING WITH UNIVERSITY WIDE SERVICES. lgbt.utah.edu

OFFICE FOR EQUITY AND DIVERSITY

THE OFFICE FOR EQUITY AND DIVERSITY IS COMPOSED OF LEADERS, EXPERTS, AND EDUCATORS WHO DRIVE THE UNIVERSITY'S EFFORTS TO CREATE A SAFE AND WELCOMING CAMPUS CLIMATE. diversity.utah.edu

STUDENT HOMELESSNESS TASK FORCE

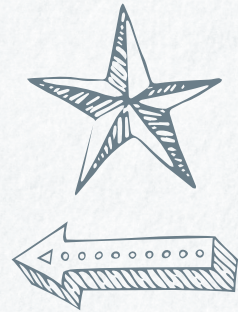
STUDENTS MAY FACE HOUSING ISSUES OR FIND THEMSELVES DISPLACED FOR MANY REASONS. EACH STUDENT'S SITUATION REQUIRES AN INDIVIDUALIZED RESPONSE THAT SUPPORTS THE ACHIEVEMENT OF THEIR EDUCATIONAL GOALS.

UNIVERSITY COUNSELING CENTER

THE UNIVERSITY COUNSELING CENTER OFFERS MENTAL HEALTH SUPPORT TO STUDENTS FACING CHALLENGES IN PERSONAL, ACADEMIC, AND CAREER CONCERNS. THEY WORK WITH STUDENTS THROUGH A COLLABORATIVE, GOAL-CENTERED, AND MULTICULTURALLY ORIENTATED APPROACH. AIMED AT MAXIMIZING STUDENT SUCCESS, THEIR SERVICES INCLUDE: INDIVIDUAL, COUPLES, AND GROUP COUNSELING; PSYCHIATRIC MEDICATION MANAGEMENT; CRISIS SERVICES; ACADEMIC, CAREER, AND PERSONALITY ASSESSMENT; OUTREACH AND TRAINING FOR THE CAMPUS COMMUNITY. counselingcenter.utah.edu

VETERANS SUPPORT CENTER

THE VETERANS SUPPORT CENTER IS A "ONE-STOP SHOP" FOR STUDENT VETERANS TO FIND SERVICES, SUPPORT, ADVOCACY, AND CAMARADERIE. SOME OF THE VSC SERVICES INCLUDE VA EDUCATIONAL BENEFITS ASSISTANCE, VA BENEFITS AND HEALTH SERVICES COUNSELING, FREE COMPUTER AND PRINTING RESOURCES, FREE TUTORING VOUCHERS AND PEER SUPPORT. THE CENTER ALSO OFFERS A LOUNGE, STUDY AREA, REFRESHMENTS, VETERANS' EVENTS, AND FREE U VET CLOTHING AND GEAR. veteranscenter.utah.edu



WOMEN'S RESOURCE CENTER

THE WOMEN'S RESOURCE CENTER (WRC) AT THE UNIVERSITY OF UTAH SERVES AS THE CENTRAL RESOURCE FOR EDUCATIONAL AND SUPPORT SERVICES FOR WOMEN. HONORING THE COMPLEXITIES OF WOMEN'S IDENTITIES, THE WRC FACILITATES CHOICES AND CHANGES THROUGH PROGRAMS, COUNSELING, AND TRAINING GROUNDED IN A COMMITMENT TO ADVANCE SOCIAL JUSTICE AND EQUALITY. womenscenter.utah.edu



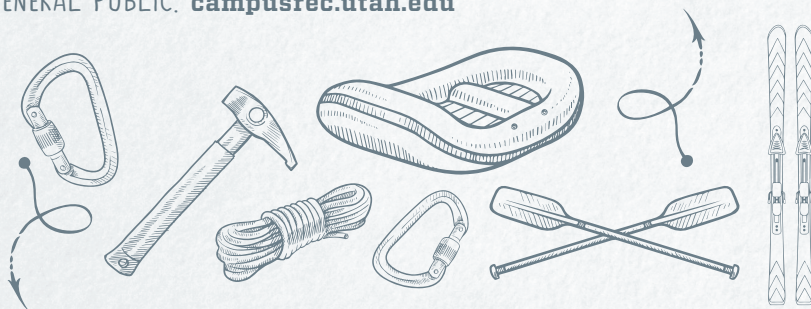
HOW DO I GET CONNECTED?

ASUU

GETTING INVOLVED WITH ASSOCIATED STUDENTS OF THE UNIVERSITY OF UTAH WILL MAKE COLLEGE LIFE EASIER AND MORE ENJOYABLE FOR YOU. THROUGHOUT THE YEAR, ASUU HOSTS FREE CONCERTS, MOVIES, DANCES, AND OTHER EVENTS DESIGNED TO ENHANCE CAMPUS COMMUNITY. ASUU ALSO COORDINATES WITH OVER 600 STUDENT GROUPS AND CLUBS OFFERING MORE WAYS FOR YOU TO FIND AND CONNECT WITH STUDENTS THAT SHARE YOUR INTERESTS. asuu.utah.edu

CAMPUS RECREATION

OUTDOOR ADVENTURES OFFER BACKCOUNTRY SKIING, CANYONEERING, RAFTING, ROCK CLIMBING, CROSS-COUNTRY SKIING, AND SO MUCH MORE. THE OUTDOOR EQUIPMENT RENTAL SHOP IS THE LARGEST OF ITS KIND IN THE NATION AND IS OPEN TO STUDENTS, FACULTY, STAFF, AND THE GENERAL PUBLIC. campusrec.utah.edu



GEORGE S. ECCLES STUDENT LIFE CENTER

HAVE AN ADVENTURE WITHOUT EVER LEAVING CAMPUS. AMENITIES INCLUDE A 50-METER POOL, INDOOR AND OUTDOOR LEISURE POOLS, LARGE INDOOR HOT TUB/SPA, 320-YARD INDOOR RUNNING TRACK, BOULDERING AND 4-STORY CLIMBING WALL, 15,000 SQUARE FOOT FITNESS CENTER, OUTDOOR MEZZANINE, OUTDOOR FIRE PIT, 5 SPORT COURTS, RACQUETBALL COURTS AND 4 GROUP FITNESS STUDIOS. ADDITIONAL AMENITIES INCLUDE A BRANCH OF THE UNIVERSITY FEDERAL CREDIT UNION, FRESHEN'S CAFE, AND THE CENTER FOR STUDENT WELLNESS. campusrec.utah.edu

WEEKS OF WELCOME

WEEKS OF WELCOME (WOW) WILL HELP YOU GET ACQUAINTED WITH LIFE ON CAMPUS, MEET OTHER INCOMING STUDENTS, AND FIND INVOLVEMENT OPPORTUNITIES THROUGH STUDENT GROUPS AND ORGANIZATIONS. THERE IS BOUND TO BE TONS OF FREE FOOD AND SWAG DURING WOW, SO DON'T MISS OUT. weeks-of-welcome.utah.edu

THE MUSS

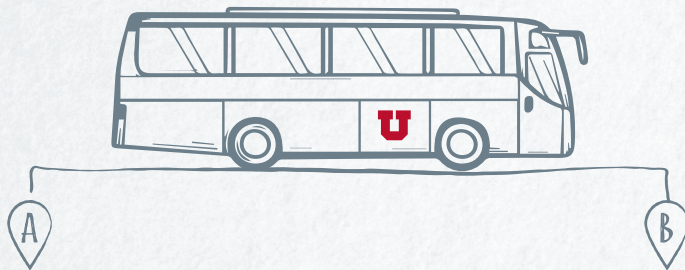
THE MIGHTY UTAH STUDENT SECTION (MUSS) IS THE UNIVERSITY OF UTAH'S STUDENT FAN CLUB. AS A UNIVERSITY STUDENT, YOU RECEIVE FREE MUSS TICKETS TO ALL ATHLETIC EVENTS ON CAMPUS INCLUDING MEN'S AND WOMEN'S BASKETBALL, GYMNASTICS, LACROSSE, ETC. STUDENTS HAVE THE OPTION TO JOIN MUSS PREMIUM WHICH INCLUDES RESERVED SEATING AT ALL HOME FOOTBALL GAMES, AN UNDER ARMOUR T-SHIRT, AND PRE-GAME TAILGATE ACCESS PRIOR TO EACH HOME FOOTBALL GAME. MUSS PREMIUM REGISTRATION TAKES PLACE IN SPRING AND DETAILS CAN BE FOUND AT alumni.utah.edu/muss



LEARNING ABROAD

WANT TO TAKE YOUR ACADEMIC EXPERIENCE OUTSIDE THE U.S.? DEVELOP INTERCULTURAL AND INTERPERSONAL SKILLS THROUGH LEARNING ABROAD. learningabroad.utah.edu

HOW DO I GET TO & AROUND CAMPUS?



CAMPUS SHUTTLES

FREE CAMPUS SHUTTLES OPERATE **MONDAY THROUGH FRIDAY** AND SHUTTLE TIMES VARY DEPENDING ON THE ROUTE. THERE IS NO REGULAR WEEKEND SHUTTLE SERVICE. VISIT UOFUBUS.COM OR DOWNLOAD THE RIDE SYSTEM APP TO TRACK EACH SHUTTLE AND TO PLAN YOUR RIDE. ROUTE INFORMATION AND APPROXIMATE TIMES ARE DISPLAYED ON THE LEFT SIDE AND APPROXIMATE ARRIVAL TIMES ARE LOCATED UNDER THE 'DETAILS' SECTION. uofubus.com

UTAH TRANSIT AUTHORITY (UTA)

UTA SERVES SALT LAKE AND THE SURROUNDING COUNTIES WITH BUS, LIGHT RAIL (TRAX), AND HIGH-SPEED RAIL (FRONTRUNNER) SERVICES. STUDENTS CAN USE THEIR UCARD TO RIDE UTA FOR FREE. USE UTA'S TRIP PLANNER AT RIDEUTA.COM TO PLAN YOUR ROUTE. IN ADDITION, GUESTS WITH A VALID TICKET TO SELECT ATHLETIC EVENTS MAY RIDE UTA VEHICLES TO CAMPUS FOR FREE THAT DAY. rideuta.com

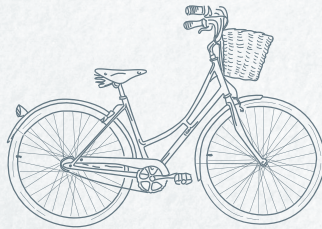
PARKING

CAMPUS MAPS DESIGNATE VEHICLE AND BICYCLE PARKING AREAS. VEHICLE PARKING ON CAMPUS IS LIMITED AND STUDENTS CHOOSING TO DRIVE MUST HAVE ONE OF THE FOLLOWING PARKING PERMITS OFFERED BY COMMUTER SERVICES.

- ⇒ **CU PERMIT** – BUSINESS LOOP CENTRAL GARAGE, LASSONDE STUDIOS LOT, U PERMIT LOTS, AND CERTAIN A PERMIT LOTS AFTER 3 P.M.
- ⇒ **D PERMIT** – FOR DISABLED STUDENTS. ADA STALLS IN A AND U PERMIT LOTS
- ⇒ **DC PERMIT** – FOR DISABLED STUDENTS. ADA STALL IN BUSINESS LOOP CENTRAL GARAGE
- ⇒ **U PERMIT** – U PERMIT LOTS AND CERTAIN A PERMIT LOTS AFTER 3 P.M.
- ⇒ **HU PERMIT** – FOR STUDENTS LIVING ON CAMPUS. HU PERMIT HOUSING LOTS AND U PERMIT LOTS
- ⇒ **HCU PERMIT** – FOR STUDENTS LIVING ON CAMPUS. BUSINESS LOOP CENTRAL GARAGE, LASSONDE STUDIO LOTS, HOUSING LOTS, U PERMIT LOTS, AND CERTAIN A PERMIT LOTS AFTER 3 P.M.
- ⇒ **SHU PERMIT** – FOR STUDENTS LIVING ON CAMPUS IN THE MEDICAL TOWERS. SHORELINE GARAGE (LEVEL ONE ONLY), U PERMIT LOTS, AND CERTAIN A PERMIT LOTS AFTER 3 P.M.
- ⇒ **M PERMIT** – FOR MOTORCYCLES AND SCOOTERS, STALLS LOCATED THROUGHOUT CAMPUS

EV CHARGING STATIONS ARE AVAILABLE ON CAMPUS AT MULTIPLE LOCATIONS.

commuterservices.utah.edu | map.utah.edu



BICYCLING

THE U HAS APPROXIMATELY 3,000 BICYCLE PARKING SPACES ACROSS CAMPUS. WE RECOMMEND THAT STUDENTS WHO BRING BICYCLES TO CAMPUS REGISTER THEIR BIKES WITH CAMPUS POLICE TO FACILITATE RECOVERY IF LOST OR STOLEN. COMMUTER SERVICES MANAGES THE CAMPUS BIKE SHOP—A FULL-SERVICE BICYCLE REPAIR SHOP FOR STUDENTS AND THE CAMPUS COMMUNITY. SERVICES INCLUDE: FLAT REPAIR, TUNE-UPS, PARTS, AND DISCOUNTED USED BICYCLES FOR SALE. **commuterservices.utah.edu**

HOW CAN I STAY SAFE ON & OFF CAMPUS?



SAFEU

SAFEU IS YOUR RESOURCE FOR ALL SAFETY-RELATED INFORMATION AT THE U. YOU CAN REPORT INCIDENCES OF THEFT, CRIME, ASSAULT, OR BIAS. YOU CAN ALSO ACCESS A WIDE VARIETY OF RESOURCES AND FIND OUT ABOUT SAFETY-RELATED TRAININGS OFFERED ON CAMPUS. safeu.utah.edu

DEPARTMENT OF SAFETY/CAMPUS POLICE

801-585-2677 (non-emergencies) | 911 (emergencies)

THE UNIVERSITY IS COMMITTED TO PROVIDING A CAMPUS ENVIRONMENT THAT PROMOTES A FEELING OF SAFETY AND SECURITY. THE DEPARTMENT OF PUBLIC SAFETY PROVIDES LAW ENFORCEMENT AND SECURITY SERVICES TO BOTH THE HOSPITAL AND THE UNDERGRADUATE CAMPUSES, INCLUDING ON-CAMPUS HOUSING. dps.utah.edu

COURTESY ESCORTS

MANY STUDENTS NEED TO BE ON CAMPUS AT NIGHT OR AT ODD HOURS. IF YOU FEEL NERVOUS WHEN YOU NEED TO WALK TO YOUR VEHICLE, RESIDENCE HALL, OR ANOTHER BUILDING ON CAMPUS CALL FOR A COURTESY ESCORT. DIAL 801-585-2677 AND TELL THE DISPATCHER YOU'D LIKE A COURTESY ESCORT. A SECURITY OFFICER WILL BE DISPATCHED TO WALK WITH YOU OR GIVE YOU A RIDE TO YOUR DESIRED LOCATION. safeu.utah.edu



CAMPUS ALERT

THE CAMPUS ALERT SYSTEM IS DESIGNED TO REACH EVERYONE ON CAMPUS IN THE BEST WAY POSSIBLE DURING AN EMERGENCY. MOST ALERTS ARE SENT VIA EMAIL, BUT ON RARE OCCASIONS EMERGENCY MESSAGES WILL BE SENT VIA TEXT. STUDENTS SHOULD REGISTER THEIR CELLPHONE NUMBERS THROUGH THE CAMPUS INFORMATION SYSTEM (CIS) TO RECEIVE TEXT MESSAGE NOTIFICATIONS DURING SERIOUS EMERGENCIES. alert.utah.edu

SAFEUT CRISIS TEXT AND TIP LINE

THIS FREE APP IS DESIGNED TO PROVIDE SUPPORT THROUGH REAL-TIME CONFIDENTIAL CRISIS INTERVENTIONS VIA LIVE CHATS AND CALLS. USERS CAN ALSO SUBMIT CONFIDENTIAL TIPS. THESE SERVICES ARE PROVIDED 24/7. tinyurl.com/safeut

SAFERIDE

SAFERIDE IS A FREE CAMPUS TRANSPORTATION SERVICE THAT ENHANCES SAFETY DURING NIGHT HOURS. STUDENTS CAN REQUEST AN ON-DEMAND RIDE AT NIGHT TO AND FROM MOST LOCATIONS ON CAMPUS, MONDAY-FRIDAY FROM 6 P.M.-12:30 A.M. REQUEST A SAFERIDE THROUGH THE TAPRIDE APP FOR APPLE OR ANDROID PHONES. commuterservices.utah.edu/safe-ride

ADDITIONAL RESOURCES:



it.utah.edu/mobileu/index.php

counselingcenter.utah.edu

campusstore.utah.edu/utah/home



THE UNIVERSITY OF UTAH

**OFFICE OF
ORIENTATION & TRANSITION**

200 S. Central Campus Drive, Suite 280

Salt Lake City, UT 84112 | 801.581.7069

orientation.utah.edu